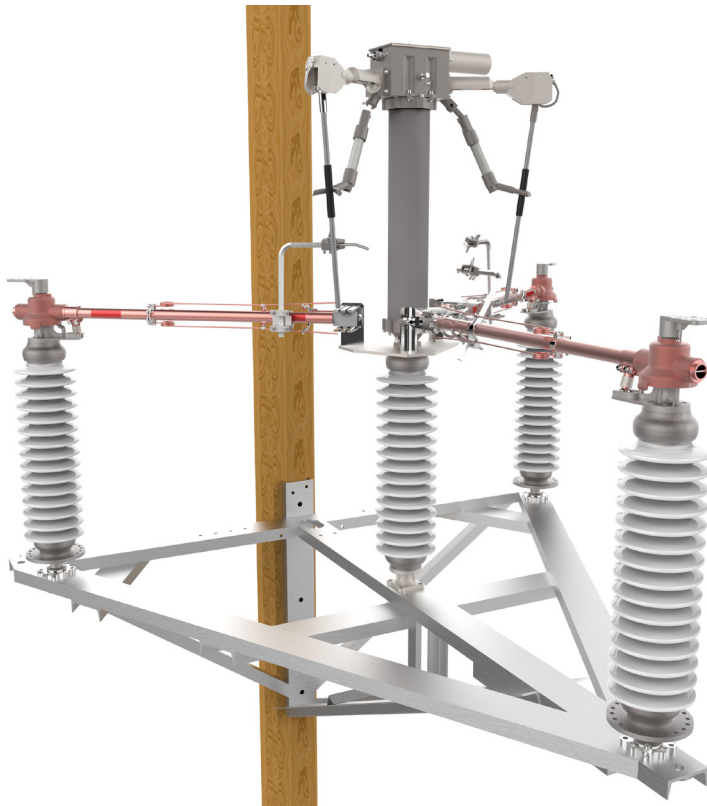


TURNER D, 3 WAY SWITCHES

TU-3D, COPPER 3 WAY SIDE BREAK SWITCH RATINGS 38-170kV AND 600-2000A

KEY BENEFITS

- Simple Design—switch designed with minimal parts, simplifying the current transfer process
- Copper Design—hard-drawn tubular design provides the proper combination of current carrying capacity and rigidity
- High Pressure Jaw—jaws are made from Beryllium copper, providing the highest conductivity and strength
- Rotating Blade—reduces opening torque through use of a wiping action, breaking any ice and contaminants free from the jaw
- Leveling —leveling screws are provided on the movable and stationary insulator mounting flange for alignment of the switch blade and contacts.



Turner Electric® | Hubbell Power Systems, Inc. | hubbellpowersystems.com

©Copyright 2017 Hubbell Incorporated. Because Hubbell has a policy of continuous product improvement, we reserve the right to change design and specifications without notice.

Printed in the U.S.A. | SF_10_144_E

